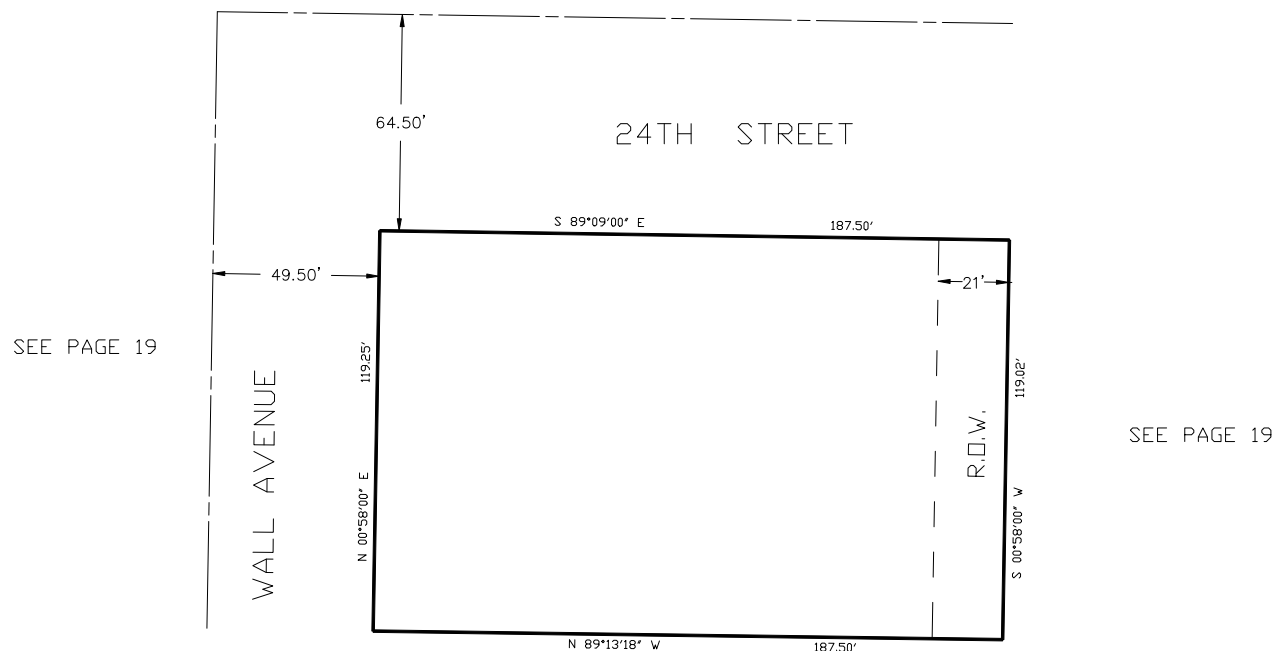


IN OGDEN CITY
SCALE 1" = 40'

TAXING UNIT: 498

SEE PAGE 19



UNIT #	SERIAL #	OWNERSHIP
201	010860001	NEW BRIGHAM INVESTORS LLC
202	010860002	NEW BRIGHAM INVESTORS LLC
203	010860003	NEW BRIGHAM INVESTORS LLC
204	010860004	NEW BRIGHAM INVESTORS LLC
205	010860005	NEW BRIGHAM INVESTORS LLC
206	010860006	NEW BRIGHAM INVESTORS LLC
207	010860007	NEW BRIGHAM INVESTORS LLC
208	010860008	NEW BRIGHAM INVESTORS LLC
209	010860009	NEW BRIGHAM INVESTORS LLC
301	010860010	NEW BRIGHAM INVESTORS LLC
302	010860011	NEW BRIGHAM INVESTORS LLC
303	010860012	NEW BRIGHAM INVESTORS LLC
304	010860013	NEW BRIGHAM INVESTORS LLC
305	010860014	NEW BRIGHAM INVESTORS LLC
306	010860015	NEW BRIGHAM INVESTORS LLC
307	010860016	NEW BRIGHAM INVESTORS LLC
308	010860017	NEW BRIGHAM INVESTORS LLC
309	010860018	NEW BRIGHAM INVESTORS LLC
C-1	010860019	NEW BRIGHAM INVESTORS LLC
C.A.	010860020	NEW BRIGHAM INVESTORS LLC

SEE PAGE 19

FOR COMPLETE ENG DATA SEE
ORIGINAL DEDICATION PLAT IN
BOOK 47, PAGE 29-33 OF RECORDS.